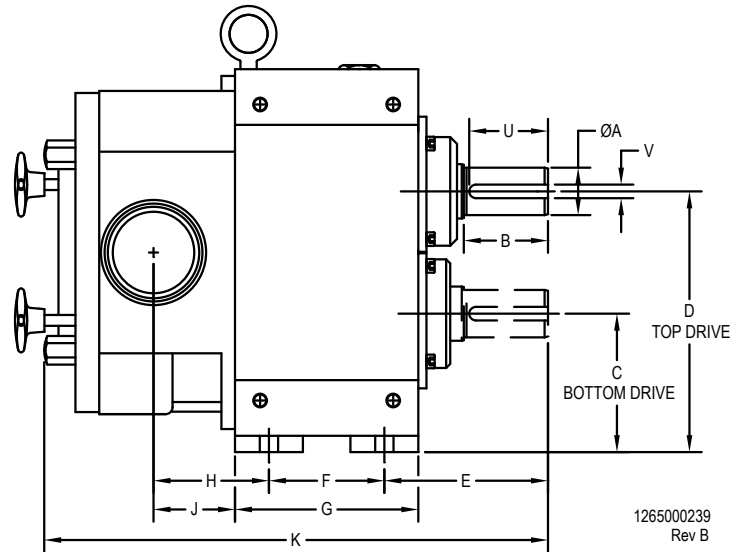
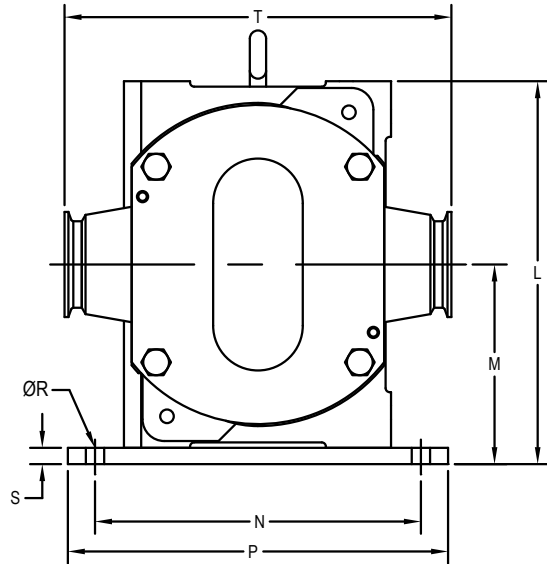




FKL Horizontal Mount Dimensional Drawing Models 15—600



1265000239
Rev B

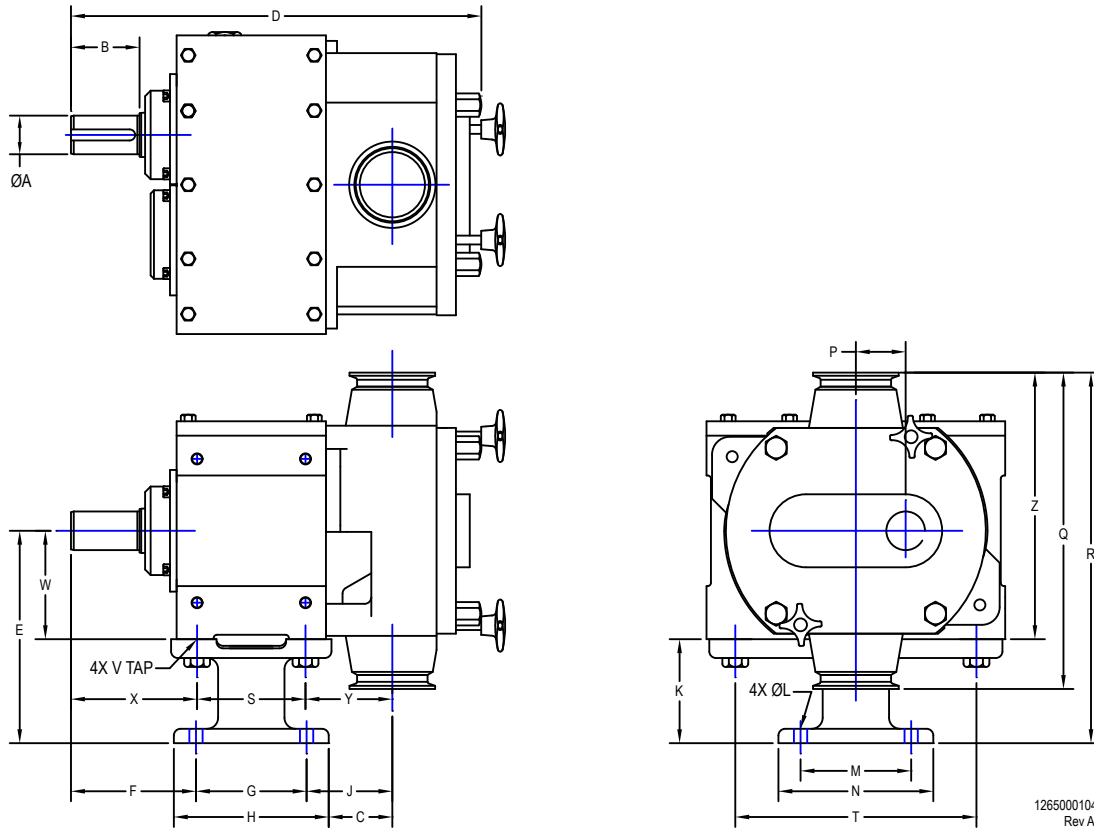
DIMENSIONS IN MILLIMETERS (INCHES)

PUMP MODEL	INLET/OUTLET	ØA	B	C	D	E	F	G	H	J	K	L	M	N	P	ØR	S	T	U	V	WEIGHT
FKL 15	1-1/2" CLAMP	3/4"	63 (2.48")	71.5 (2.81")	137.5 (5.41")	82 (3.23")	82 (3.23")	107.5 (4.23")	39 (1.54")	26 (1.02")	242.5 (9.55")	196.5 (7.74")	104.5 (4.11")	150 (5.91")	170 (6.69")	10.5 (0.41")	9.5 (0.37")	173 (6.81")	50 (1.97")	4.8 (0.19")	19 kg (42 lbs)
FKL 20	1-1/2" CLAMP	3/4"	63 (2.48")	71.5 (2.81")	137.5 (5.41")	82 (3.23")	82 (3.23")	107.5 (4.23")	39 (1.54")	26 (1.02")	245.5 (9.67")	196.5 (7.74")	104.5 (4.11")	150 (5.91")	170 (6.69")	10.5 (0.41")	9.5 (0.37")	173 (6.81")	50 (1.97")	4.8 (0.19")	20 kg (44 lbs)
FKL 25	1-1/2" CLAMP	1-1/4"	41 (1.61")	93.5 (3.68")	173.5 (6.83")	76 (2.99")	117 (4.61")	155 (6.10")	84 (3.31")	65 (2.56")	328.5 (12.93")	254.5 (10.02")	133.5 (5.26")	219 (8.62")	241 (9.49")	11 (0.43")	12.5 (0.50")	198 (7.80")	33 (1.30")	6.4 (0.25")	49 kg (108 lbs)
FKL 50	2-1/2" CLAMP	1-3/8"	62 (2.44")	102.5 (4.04")	192.5 (7.58")	120.5 (4.74")	85 (3.35")	136 (5.35")	88 (3.46")	63 (2.48")	371 (14.61")	282.5 (11.12")	147.5 (5.81")	240 (9.45")	280 (11.02")	13.5 (0.53")	12.5 (0.50")	285 (11.22")	55 (2.17")	7.9 (0.31")	64 kg (141 lbs)
FKL 75	2-1/2" CLAMP	1-5/8"	73 (2.87")	157 (6.18")	271 (10.67")	118 (4.65")	150 (5.91")	200 (7.87")	103.5 (4.07")	78 (3.07")	454 (17.87")	409 (16.10")	214 (8.43")	343 (13.50")	393 (15.47")	17.5 (0.69")	19 (0.75")	306 (12.05")	55 (2.17")	9.5 (0.38")	169 kg (372 lbs)
FKL 150	3" CLAMP	1-3/4"	67 (2.64")	171 (6.73")	291 (11.46")	114 (4.49")	177.5 (6.99")	227.5 (8.96")	111.5 (4.39")	86.5 (3.40")	494 (19.45")	443 (17.44")	231 (9.09")	364 (14.33")	414 (16.30")	17.5 (0.69")	19 (0.75")	326 (12.83")	61 (2.40")	9.5 (0.38")	210 kg (463 lbs)
FKL 205	4" CLAMP	2-1/4"	106 (4.17")	174.5 (6.87")	323 (12.72")	143 (5.63")	182 (7.17")	233 (9.17")	113 (4.45")	87.5 (3.44")	548 (21.57")	478.5 (18.84")	249 (9.80")	381 (15.00")	419 (16.50")	17.5 (0.69")	19 (0.75")	344 (13.54")	75 (2.95")	12.7 (0.50")	287 kg (632 lbs)
FKL 250	4" CLAMP	2-1/2"	79 (3.11")	194.5 (7.66")	357 (14.06")	129.5 (5.10")	215 (8.46")	265 (10.43")	123 (4.84")	98 (3.86")	578.5 (22.78")	532.5 (20.96")	276 (10.87")	381 (15.00")	419 (16.50")	17.5 (0.69")	19 (0.75")	377 (14.84")	65 (2.56")	15.9 (0.63")	343 kg (756 lbs)
FKL 400	6" CLAMP	2-7/8"	89 (3.50")	209.5 (8.25")	385.5 (15.18")	152.5 (6.00")	234 (9.21")	285 (11.22")	107 (4.21")	81.5 (3.21")	637.5 (25.10")	569.5 (22.42")	297.5 (11.71")	432 (17.01")	482 (18.98")	22 (0.88")	25.5 (1.00")	499.5 (19.66")	80 (3.15")	19 (0.75")	440 kg (970 lbs)
FKL 580	6" CLAMP	100 (3.94")	141 (5.55")	235 (9.27")	455 (17.93")	208 (8.19")	204 (8.03")	255 (10.03")	173 (6.80")	148 (5.81")	777 (30.60")	681 (26.81")	345 (13.58")	500 (19.69")	540 (21.25")	22 (0.88")	25.5 (1.00")	704 (27.72")	135 (5.31")	28 (1.10")	708 kg (1560 lbs)
FKL 600	6" 300# FLANGE	100 (3.94")	141 (5.55")	235 (9.27")	455 (17.93")	208 (8.19")	204 (8.03")	255 (10.03")	197 (7.75")	172 (6.77")	801 (31.54")	681 (26.81")	345 (13.58")	500 (19.69")	540 (21.25")	22 (0.88")	25.5 (1.00")	707 (27.83")	135 (5.31")	28 (1.10")	750 kg (1660 lbs)

1265000240 Rev J



FKL Vertical Mount Dimensional Drawing Models 15—600



1265000104
Rev A

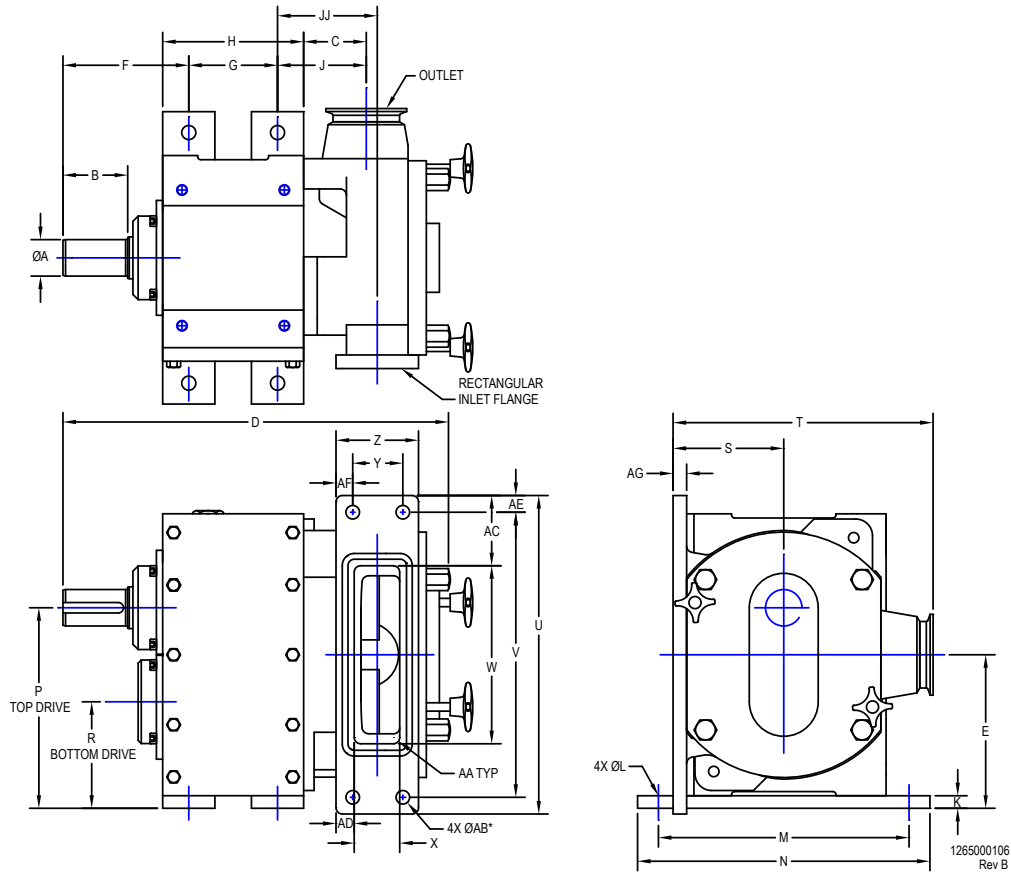
DIMENSIONS IN MILLIMETERS (INCHES)												
PUMP MODEL	INLET / OUTLET	ØA	B	C	D	E	F	G	H	J	K	ØL
FKL 15	1-1/2" CLAMP	3/4"	63 (2.48")	30 (1.17")	242.5 (9.55")	141 (5.55")	82 (3.23")	82 (3.23")	100 (3.94")	39 (1.53")	78 (3.07")	9 (0.35")
FKL 20	1-1/2" CLAMP	3/4"	63 (2.48")	30 (1.17")	245.5 (9.67")	141 (5.55")	82 (3.23")	82 (3.23")	100 (3.94")	39 (1.53")	78 (3.07")	9 (0.35")
FKL 25	1-1/2" CLAMP	1-1/4"	41 (1.61")	66 (2.60")	328.5 (12.93")	174 (6.85")	76 (3.00")	117 (4.61")	153 (6.02")	84 (3.31")	88 (3.46")	11 (0.43")
FKL 50	2-1/2" CLAMP	1-3/8"	62 (2.44")	60.5 (2.38")	371 (14.61")	192 (7.56")	113 (4.46")	100 (3.94")	140 (5.51")	80.5 (3.17")	94 (3.70")	12 (0.47")
FKL 75	2-1/2" CLAMP	1-5/8"	73 (2.87")	78.5 (3.09")	454 (17.87")	271 (10.67")	118 (4.66")	150 (5.91")	200 (7.87")	103.5 (4.07")	136 (5.35")	17.5 (0.69")
FKL 150	3" CLAMP	1-3/4"	67 (2.64")	87.5 (3.45")	494 (19.45")	291 (11.46")	115.5 (4.54")	175 (6.89")	225 (8.86")	113 (4.44")	141 (5.55")	17.5 (0.69")
FKL 205	4" CLAMP	2-1/4"	106 (4.17")	88 (3.46")	548 (21.57")	323 (12.72")	143 (5.63")	182 (7.17")	232 (9.13")	113 (4.44")	163 (6.42")	17.5 (0.69")
FKL 250	4" CLAMP	2-1/2"	79 (3.11")	99.5 (3.92")	578.5 (22.78")	357.5 (14.07")	129.5 (5.10")	215 (8.46")	262 (10.31")	123 (4.84")	195 (7.68")	17.5 (0.69")
FKL 400	6" CLAMP	2-7/8"	89 (3.50")	-	637.5 (25.10")	-	-	-	-	-	-	-

PUMP MODEL	M	N	P	Q	R	S	T	V TAP	W	X	Y	Z	WEIGHT
FKL 15	88 (3.46")	105 (4.13")	33 (1.30")	173 (6.81")	227.5 (8.96")	82 (3.23")	88 (3.46")	M8X1.25	63 (2.48")	82 (3.23")	39 (1.54")	149.5 (5.89")	21 kg 45.5 lbs
FKL 20	88 (3.46")	105 (4.13")	33 (1.30")	173 (6.81")	227.5 (8.96")	82 (3.23")	88 (3.46")	M8X1.25	63 (2.48")	82 (3.23")	39 (1.54")	149.5 (5.89")	22 kg 48.5 lbs
FKL 25	122 (4.80")	158 (6.22")	40 (1.57")	198 (7.80")	271.5 (10.69")	117 (4.61")	122 (4.80")	M10X1.5	86 (3.39")	71 (2.80")	84 (3.31")	185 (7.29")	53 kg 117 lbs
FKL 50	100 (3.94")	140 (5.51")	45 (1.77")	285 (11.22")	334.5 (13.17")	98 (3.86")	218 (8.58")	M10X1.5	98 (3.86")	81.5 (3.21")	76.5 (3.01")	240.5 (9.47")	68 kg 150 lbs
FKL 75	100 (3.94")	150 (5.91")	57 (2.24")	306 (12.05")	424 (16.68")	150 (5.91")	215 (8.46")	M16X2	135 (5.31")	118 (4.65")	103.5 (4.07")	288 (11.33")	175 kg 387 lbs
FKL 150	130 (5.12")	180 (7.09")	60 (2.36")	326 (12.83")	454 (17.88")	177.5 (6.99")	240 (9.45")	M16X2	150 (5.91")	114 (4.49")	111.5 (4.39")	313 (12.33")	220 kg 486 lbs
FKL 205	212 (8.35")	262 (10.31")	74 (2.92")	344 (13.54")	495 (19.48")	182 (7.17")	262 (10.31")	M16X2	160 (6.30")	143 (5.63")	113 (4.45")	332 (13.07")	287 kg 632 lbs
FKL 250	215 (8.46")	262 (10.31")	81 (3.20")	377 (14.84")	546 (21.49")	215 (8.46")	262 (10.31")	M16X2	162.5 (6.40")	129.5 (5.10")	123 (4.84")	351 (13.81")	369 kg 813 lbs
FKL 400	-	-	88 (3.46")	499.5 (19.66")	-	234 (9.21")	300 (11.81")	M20X2.5	188 (7.40")	152.5 (6.00")	107 (4.21")	438 (17.23")	455 kg 1004 lbs

1265000260 Rev D



FKL Horizontal Mount Dimensional Drawing Models 50—400, Rectangular Inlet



DIMENSIONS IN MILLIMETERS (INCHES)

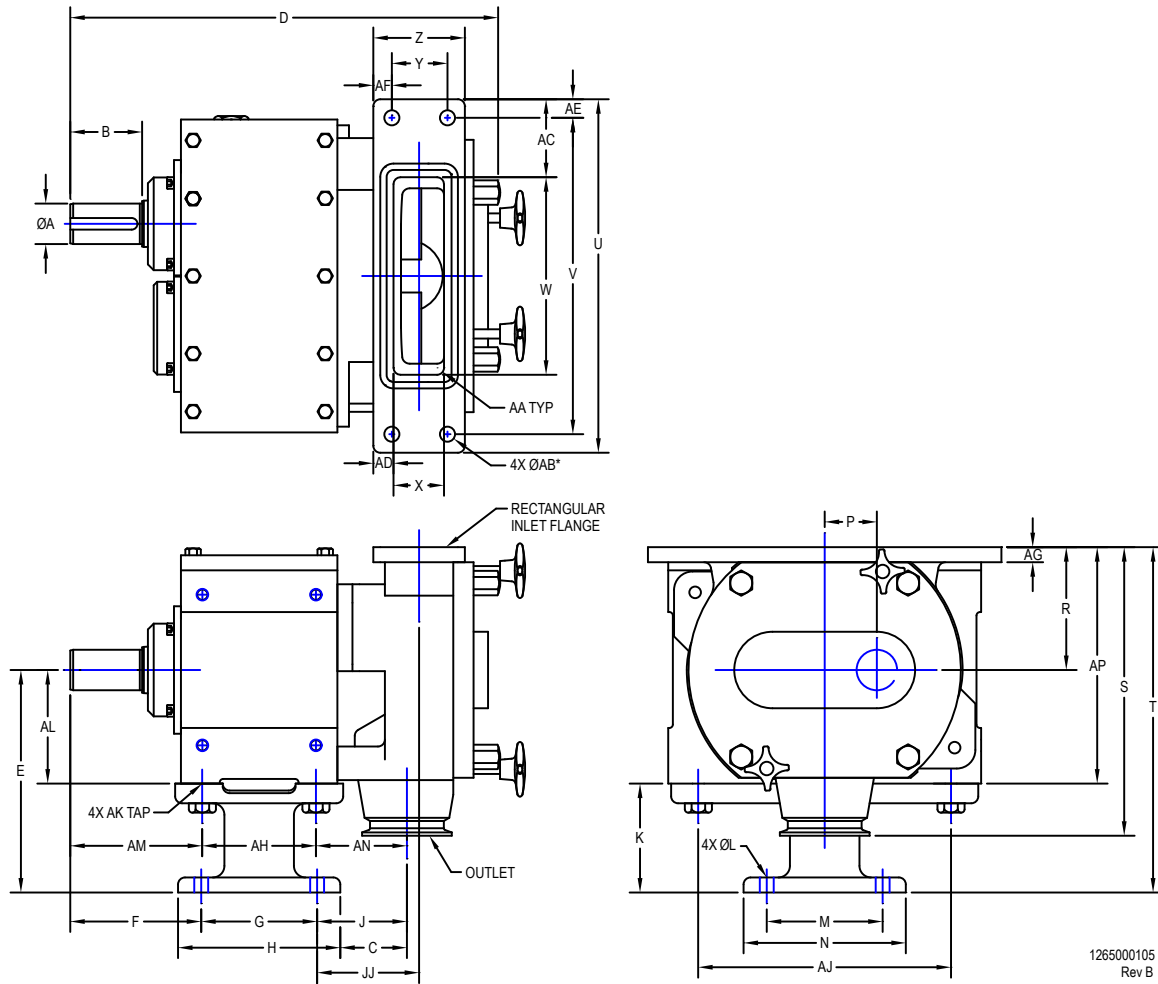
PUMP MODEL	OUTLET	ØA	B	C	D	E	F	G	H	J	JJ	K	ØL	M	N	P	R
FKL 50	2-1/2" CLAMP	1-3/8"	62 (2.44")	63 (2.48")	371 (14.61")	147.5 (5.81")	120.5 (4.74")	85 (3.35")	136 (5.35")	88 (3.46")	95 (3.74")	12.5 (0.50")	13.5 (0.53")	240 (9.45")	280 (11.02")	192.5 (7.58")	102.5 (4.04")
FKL 75	2-1/2" CLAMP	1-5/8"	73 (2.87")	78 (3.07")	454 (17.87")	214 (8.43")	118 (4.65")	150 (5.91")	200 (7.87")	103.5 (4.07")	105 (4.13")	19 (0.75")	17.5 (0.69")	343 (13.50")	393 (15.47")	271 (10.67")	157 (6.18")
FKL 150	3" CLAMP	1-3/4"	67 (2.64")	86.5 (3.40")	494 (19.45")	231 (9.09")	114 (4.49")	177.5 (6.99")	227.5 (8.96")	111.5 (4.39")	106 (4.17")	19 (0.75")	17.5 (0.69")	364 (14.33")	414 (16.30")	291 (11.46")	171 (6.73")
FKL 205	4" CLAMP	2-1/4"	106 (4.17")	87.5 (3.44")	548 (21.57")	249 (9.80")	143 (5.63")	182 (7.17")	233 (9.17")	113 (4.45")	113 (4.45")	19 (0.75")	17.5 (0.69")	381 (15.00")	419 (16.50")	323 (12.72")	174.5 (6.87")
FKL 250	4" CLAMP	2-1/2"	79 (3.11")	98 (3.86")	578.5 (22.78")	276 (10.87")	129.5 (5.10")	215 (8.46")	265 (10.43")	123 (4.84")	122.5 (4.82")	19 (0.75")	17.5 (0.69")	381 (15.00")	419 (16.50")	357 (14.06")	194.5 (7.66")
FKL 400	6" CLAMP	2-7/8"	89 (3.50")	81.5 (3.21")	637.5 (25.10")	297.5 (11.71")	152.5 (6.00")	234 (9.21")	285 (11.22")	107 (4.21")	113 (4.45")	25.5 (1.00")	22 (0.88")	432 (17.01")	482 (18.98")	385.5 (15.18")	209.5 (8.25")

PUMP MODEL	S	T	U	V	W	X	Y	Z	AA	ØAB	AC	AD	AE	AF	AG	WEIGHT
FKL 50	106 (4.17")	249 (9.80")	305 (12.01")	273 (10.75")	171 (6.73")	44 (1.73")	48 (1.89")	79 (3.11")	R6 (0.24"R)	13.5 (0.53")	67 (2.64")	17 (0.67")	16 (0.63")	15.5 (0.61")	13 (0.51")	68 kg 150 lbs
FKL 75	145 (5.71")	298 (11.72")	336 (13.23")	310 (12.20")	224 (8.82")	57 (2.24")	102 (4.02")	127 (5.00")	R10 (0.39"R)	13.5 (0.53")	56 (2.20")	35 (1.38")	13 (0.51")	13 (0.51")	13 (0.51")	177 kg 391 lbs
FKL 150	157 (6.18")	320 (12.60")	387 (15.24")	355 (13.98")	235 (9.25")	75 (2.95")	84 (3.31")	118 (4.65")	R10 (0.39"R)	13.5 (0.53")	76 (2.99")	21.5 (0.85")	16 (0.63")	17 (0.67")	13 (0.51")	220 kg 486 lbs
FKL 205	163 (6.42")	335 (13.19")	457 (17.99")	425 (16.73")	279 (10.98")	99 (3.90")	111 (4.37")	143 (5.63")	R10 (0.39"R)	13.5 (0.53")	89 (3.50")	22 (0.87")	16 (0.63")	16 (0.63")	13 (0.51")	289 kg 637 lbs
FKL 250	181 (7.13")	369 (14.54")	457 (17.99")	425 (16.73")	279 (10.98")	99 (3.90")	111 (4.37")	143 (5.63")	R10 (0.39"R)	13.5 (0.53")	89 (3.50")	22 (0.87")	16 (0.63")	16 (0.63")	13 (0.51")	366 kg 807 lbs
FKL 400	243 (9.57")	493 (19.41")	505 (19.88")	470 (18.50")	441 (17.36")	127 (5.00")	209.5 (8.25")	241 (9.49")	R13 (0.51"R)	17 (0.66")	32 (1.26")	57 (2.24")	17.5 (0.69")	15.5 (0.61")	22 (0.87")	513 kg 1131 lbs

* FKL 400 HAS 8 HOLES IN FLANGE



FKL Vertical Mount Dimensional Drawing Models 50—400, Rectangular Inlet



1265000105
Rev B

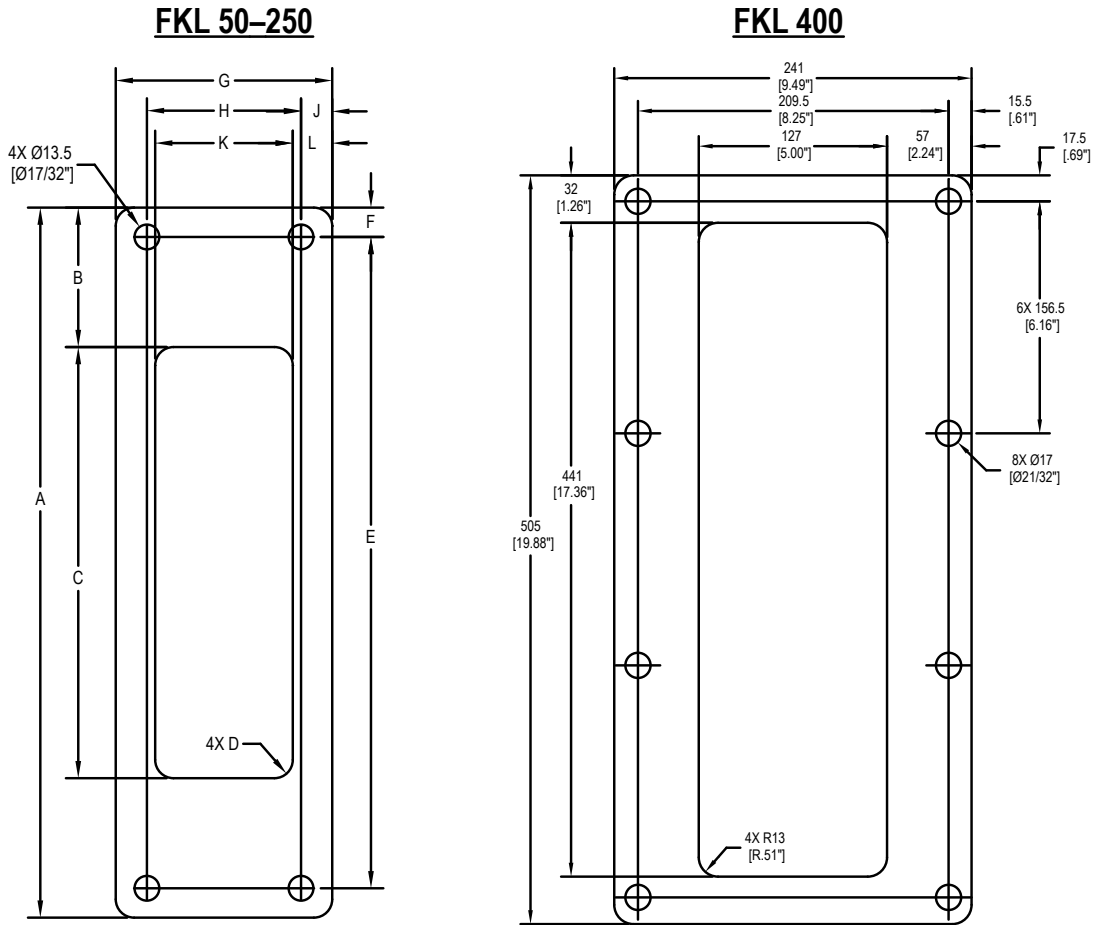
DIMENSIONS IN MILLIMETERS (INCHES)																			
PUMP MODEL	OUTLET	ØA	B	C	D	E	F	G	H	J	JJ	K	ØL	M	N	P	R	S	T
FKL 50	2-1/2" CLAMP	1-3/8"	62 (2.44")	60.5 (2.38")	371 (14.61")	192 (7.56")	113 (4.46")	100 (3.94")	140 (5.51")	77.5 (3.05")	87.5 (3.44")	94 (3.70")	12 (0.47")	100 (3.94")	140 (5.51")	45 (1.77")	106 (4.17")	249 (9.80")	298 (11.73")
FKL 75	2-1/2" CLAMP	1-5/8"	73 (2.87")	78.5 (3.09")	454 (17.87")	271 (10.68")	118.5 (4.66")	150 (5.91")	200 (7.87")	103.5 (4.07")	105 (4.13")	136 (5.35")	17.5 (0.69")	100 (3.94")	150 (5.91")	57 (2.24")	145 (5.71")	298 (11.72")	416 (16.38")
FKL 150	3" CLAMP	1-3/4"	67 (2.64")	87.5 (3.45")	494 (19.45")	291 (11.46")	113 (4.44")	175 (6.89")	225 (8.86")	115.5 (4.54")	107 (4.22")	141 (5.55")	17.5 (0.69")	130 (5.12")	180 (7.09")	60 (2.36")	157 (6.18")	320 (12.60")	448 (17.64")
FKL 205	4" CLAMP	2-1/4"	106 (4.17")	88 (3.46")	548 (21.57")	323 (12.72")	143 (5.63")	182 (7.17")	232 (9.13")	113 (4.44")	113 (4.44")	163 (6.42")	17.5 (0.69")	212 (8.35")	262 (10.31")	74 (2.92")	163 (6.42")	335 (13.19")	486 (19.13")
FKL 250	4" CLAMP	2-1/2"	79 (3.11")	99.5 (3.92")	578.5 (22.78")	357.5 (14.07")	129.5 (5.10")	215 (8.46")	262 (10.31")	123 (4.84")	122.5 (4.82")	195 (7.68")	17.5 (0.69")	215 (8.46")	262 (10.31")	81 (3.20")	181 (7.13")	369 (14.54")	538.5 (21.20")
FKL 400	6" CLAMP	2-7/8"	89 (3.50")	-	637.5 (25.10")	-	-	-	-	-	-	-	-	-	-	88 (3.46")	243 (9.57")	493 (19.41")	-

PUMP MODEL	U	V	W	X	Y	Z	AA	ØAB	AC	AD	AE	AF	AG	AH	AJ	AK TAP	AL	AM	AN	AP	WEIGHT
FKL 50	305 (12.01")	273 (10.75")	171 (6.73")	44 (1.73")	48 (1.89")	79 (3.11")	R6 (0.24"R)	13.5 (0.53")	67 (2.64")	17 (0.67")	16 (0.63")	15.5 (0.61")	13 (0.51")	98 (3.86")	218 (8.58")	M10X1.5	98 (3.86")	112 (4.41")	76.5 (3.01")	204 (8.03")	68 kg 150 lbs
FKL 75	336 (13.23")	310 (12.20")	224 (8.82")	57 (2.24")	102 (4.02")	127 (5.00")	R10 (0.39"R)	13.5 (0.53")	56 (2.20")	35 (1.38")	13 (0.51")	13 (0.51")	13 (0.51")	150 (5.91")	215 (8.46")	M16X2	135 (5.31")	118 (4.65")	103.5 (4.07")	280 (11.02")	177 kg 391 lbs
FKL 150	387 (15.24")	355 (13.98")	235 (9.25")	75 (2.95")	84 (3.31")	118 (4.65")	R10 (0.39"R)	13.5 (0.53")	76 (2.99")	21.5 (0.85")	16 (0.63")	17 (0.67")	13 (0.51")	177.5 (6.99")	240 (9.45")	M16X2	150 (5.91")	114 (4.49")	111.5 (4.39")	307 (12.09")	220 kg 486 lbs
FKL 205	457 (17.99")	425 (16.73")	279 (10.98")	99 (3.90")	111 (4.37")	143 (5.63")	R10 (0.39"R)	13.5 (0.53")	89 (3.50")	22 (0.87")	16 (0.63")	16 (0.63")	13 (0.51")	182 (7.17")	262 (10.31")	M16X2	160 (6.30")	143 (5.63")	113 (4.45")	323 (12.72")	289 kg 637 lbs
FKL 250	457 (17.99")	425 (16.73")	279 (10.98")	99 (3.90")	111 (4.37")	143 (5.63")	R10 (0.39"R)	13.5 (0.53")	89 (3.50")	22 (0.87")	16 (0.63")	16 (0.63")	13 (0.51")	215 (8.46")	262 (10.31")	M16X2	162.5 (6.40")	129.5 (5.10")	123 (4.84")	343.5 (13.52")	366 kg 807 lbs
FKL 400	505 (19.88")	470 (18.50")	441 (17.36")	127 (5.00")	209.5 (8.25")	241 (9.49")	R13 (0.51"R)	17 (0.67")	32 (1.26")	57 (2.24")	17.5 (0.69")	15.5 (0.61")	22 (0.87")	234 (9.21")	300 (11.81")	M20X2.5	188 (7.40")	152.5 (6.00")	107 (4.21")	431 (16.97")	481 kg 1060 lbs

* FKL 400 HAS 8 HOLES IN FLANGE



FKL Rectangular Inlet Dimensional Drawing Models 50—400



1265000524
Rev C

DIMENSIONES EN MILIMETROS (PULGADAS)

MODELO	ENTRADA / SALIDA	ØA	B	C	D	E	F	G	H	J	K	ØL
FKL 15	1-1/2" CLAMP	3/4"	63 (2.48")	30 (1.17")	242.5 (9.55")	141 (5.55")	82 (3.23")	82 (3.23")	100 (3.94")	39 (1.53")	78 (3.07")	9 (0.35")
FKL 20	1-1/2" CLAMP	3/4"	63 (2.48")	30 (1.17")	245.5 (9.67")	141 (5.55")	82 (3.23")	82 (3.23")	100 (3.94")	39 (1.53")	78 (3.07")	9 (0.35")
FKL 25	1-1/2" CLAMP	1-1/4"	41 (1.61")	66 (2.60")	328.5 (12.93")	174 (6.85")	76 (3.00")	117 (4.61")	153 (6.02")	84 (3.31")	88 (3.46")	11 (0.43")
FKL 50	2-1/2" CLAMP	1-3/8"	62 (2.44")	60.5 (2.38")	371 (14.61")	192 (7.56")	113 (4.46")	100 (3.94")	140 (5.51")	80.5 (3.17")	94 (3.70")	12 (0.47")
FKL 75	2-1/2" CLAMP	1-5/8"	73 (2.87")	78.5 (3.09")	454 (17.87")	271 (10.67")	118 (4.66")	150 (5.91")	200 (7.87")	103.5 (4.07")	136 (5.35")	17.5 (0.69")
FKL 150	3" CLAMP	1-3/4"	67 (2.64")	87.5 (3.45")	494 (19.45")	291 (11.46")	115.5 (4.54")	175 (6.89")	225 (8.86")	113 (4.44")	141 (5.55")	17.5 (0.69")
FKL 205	4" CLAMP	2-1/4"	106 (4.17")	88 (3.46")	548 (21.57")	323 (12.72")	143 (5.63")	182 (7.17")	232 (9.13")	113 (4.44")	163 (6.42")	17.5 (0.69")
FKL 250	4" CLAMP	2-1/2"	79 (3.11")	99.5 (3.92")	578.5 (22.78")	357.5 (14.07")	129.5 (5.10")	215 (8.46")	262 (10.31")	123 (4.84")	195 (7.68")	17.5 (0.69")