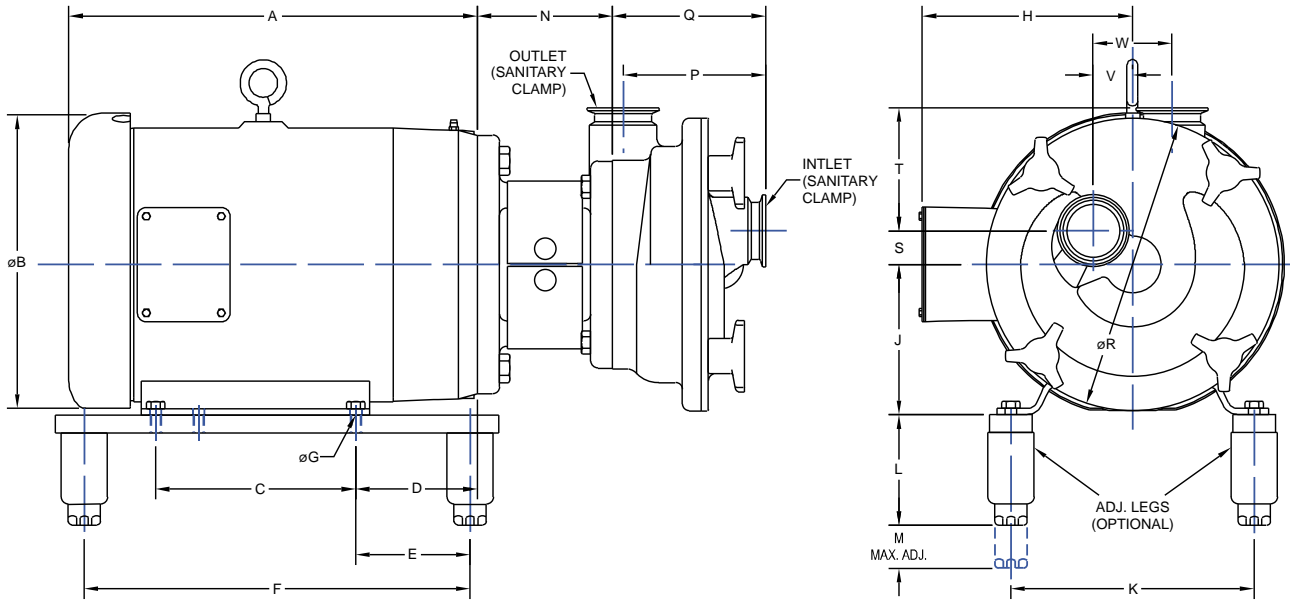


FZ 2000 Dimensions



1265000016
4/9/02

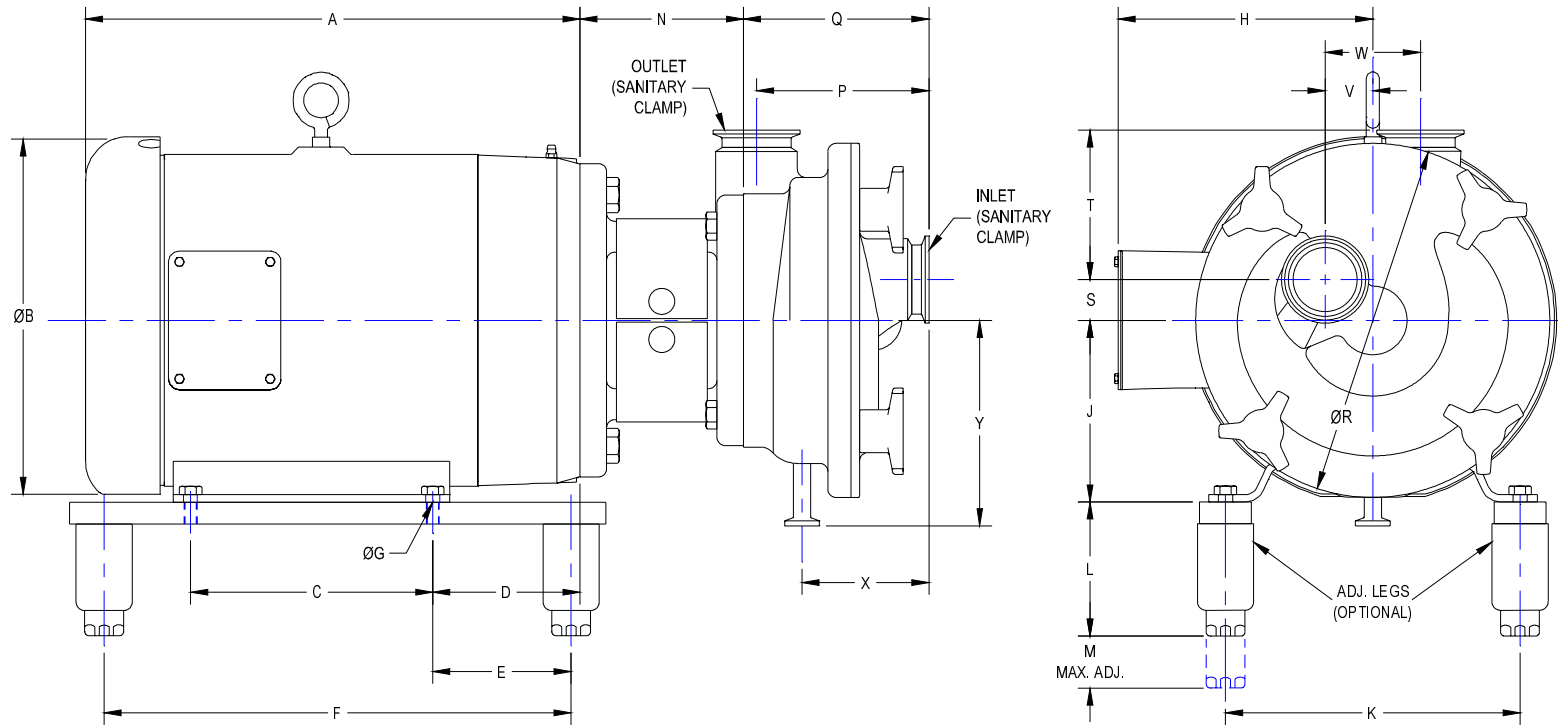
MOTOR HP	MOTOR FRAME	DIMENSIONS IN MILLIMETERS (INCHES)												
		A	ØB	C	D	E	F	ØG	H	J	K	L	M	N
3 HP	182TC	354 (13.92")	Ø183 (Ø7.19")	114 (4.50")	73 (2.87")	102 (4.00")	343 (13.50")	Ø10.5 (Ø.41")	149 (5.87")	114 (4.50")	191 (7.50")	98.5 (3.88")	38 (1.50")	120 (4.72")
5 HP	184TC	361 (14.20")	Ø226 (Ø8.92")	140 (5.50")	73 (2.87")	102 (4.00")	343 (13.50")	Ø10.5 (Ø.41")	149 (5.87")	114 (4.50")	191 (7.50")	98.5 (3.88")	38 (1.50")	120 (4.72")
7.5 HP	213TC	383 (15.10")	Ø263 (Ø10.34")	140 (5.50")	89 (3.50")	102 (4.00")	343 (13.50")	Ø10.5 (Ø.41")	187 (7.37")	133 (5.25")	216 (8.50")	98.5 (3.88")	38 (1.50")	120 (4.72")
10 HP	215TC	398 (15.65")	Ø263 (Ø10.34")	178 (7.00")	89 (3.50")	102 (4.00")	343 (13.50")	Ø10.5 (Ø.41")	187 (7.37")	133 (5.25")	216 (8.50")	98.5 (3.88")	38 (1.50")	120 (4.72")
15 HP	254TC	496 (19.56")	Ø270 (Ø10.62")	210 (8.25")	108 (4.25")	67 (2.63")	343 (13.50")	Ø13.5 (Ø.53")	244 (9.62")	159 (6.25")	254 (10.00")	98.5 (3.88")	38 (1.50")	120 (4.72")
20 HP	256TC	487 (19.16")	Ø336 (Ø13.25")	254 (10.00")	108 (4.25")	95 (3.75")	394 (15.50")	Ø13.5 (Ø.53")	244 (9.62")	159 (6.25")	254 (10.00")	98.5 (3.88")	38 (1.50")	120 (4.72")
40 HP	324TC	636 (25.03")	Ø413 (Ø16.25")	260 (10.25")	133 (5.25")	121 (4.75")	470 (18.50")	Ø16.7 (Ø.66")	359 (14.12")	203 (8.00")	318 (12.50")	117 (4.62")	44.5 (1.75")	171 (6.73")
50 HP	326TC	636 (25.03")	Ø413 (Ø16.25")	305 (12.00")	133 (5.25")	121 (4.75")	470 (18.50")	Ø16.7 (Ø.66")	359 (14.12")	203 (8.00")	318 (12.50")	117 (4.62")	44.5 (1.75")	171 (6.73")
60 HP	364TC	685 (26.96")	Ø467 (Ø18.38")	286 (11.25")	149 (5.87")	89 (3.50")	508 (20.00")	Ø16.7 (Ø.66")	383 (15.06")	229 (9.00")	356 (14.00")	127 (5.00")	44.5 (1.75")	171 (6.73")
75 HP	365TC	685 (26.96")	Ø467 (Ø18.38")	311 (12.25")	149 (5.87")	89 (3.50")	508 (20.00")	Ø16.7 (Ø.66")	383 (15.06")	229 (9.00")	356 (14.00")	127 (5.00")	44.5 (1.75")	171 (6.73")

PUMP MODEL	INLET & OUTLET	DIMENSIONS IN MILLIMETERS (INCHES)						
		P	Q	ØR	S	T	V	W
2100/2150	2"	133.5 (5.26")	141 (5.56")	226 (8.90")	21 (.83")	110 (4.33")	30 (1.18")	62.5 (2.46")
2200	2"	126.9 (5.00")	136.5 (5.37")	260 (10.24")	30 (1.18")	110 (4.33")	35 (1.38")	70 (2.75")
2250	2-1/2"	137.5 (5.41")	141 (5.56")	275 (10.83")	25 (.98")	117 (4.61")	37.2 (1.46")	75.5 (2.97")
2400	3"	158.2 (6.23")	164.2 (6.46")	340 (13.39")	29 (1.14")	151 (5.93")	49 (1.93")	96.6 (3.80")

1265000015
4/9/02

FZX 2000 Dimensional Drawings

Pharmaceutical version with casing drain



1265000032
5/23/02

MOTOR HP	MOTOR FRAME	DIMENSIONS IN MILLIMETERS (INCHES)													
		A	ØB	C	D	E	F	ØG	H	J	K	L	M	N	
3 HP	182TC	354 (13.92")	Ø183 (Ø7.19")	114 (4.50")	73 (2.87")	102 (4.00")	343 (13.50")	Ø10.5 (Ø.41")	149 (5.87")	114 (4.50")	191 (7.50")	98.5 (3.88")	38 (1.50")	120 (4.72")	
5 HP	184TC	361 (14.20")	Ø226 (Ø8.92")	140 (5.50")	73 (2.87")	102 (4.00")	343 (13.50")	Ø10.5 (Ø.41")	149 (5.87")	114 (4.50")	191 (7.50")	98.5 (3.88")	38 (1.50")	120 (4.72")	
7.5 HP	213TC	383 (15.10")	Ø263 (Ø10.34")	140 (5.50")	89 (3.50")	102 (4.00")	343 (13.50")	Ø10.5 (Ø.41")	187 (7.37")	133 (5.25")	216 (8.50")	98.5 (3.88")	38 (1.50")	120 (4.72")	
10 HP	215TC	398 (15.65")	Ø263 (Ø10.34")	178 (7.00")	89 (3.50")	102 (4.00")	343 (13.50")	Ø10.5 (Ø.41")	187 (7.37")	133 (5.25")	216 (8.50")	98.5 (3.88")	38 (1.50")	120 (4.72")	
15 HP	254TC	496 (19.58")	Ø270 (Ø10.62")	210 (8.25")	108 (4.25")	67 (2.63")	343 (13.50")	Ø13.5 (Ø.53")	244 (9.62")	159 (6.25")	254 (10.00")	98.5 (3.88")	38 (1.50")	120 (4.72")	
20 HP	256TC	487 (19.18")	Ø336 (Ø13.25")	254 (10.00")	108 (4.25")	95 (3.75")	394 (15.50")	Ø13.5 (Ø.53")	244 (9.62")	159 (6.25")	254 (10.00")	98.5 (3.88")	38 (1.50")	120 (4.72")	
40 HP	324TC	636 (25.03")	Ø413 (Ø16.25")	260 (10.25")	133 (5.25")	121 (4.75")	470 (18.50")	Ø16.7 (Ø.66")	359 (14.12")	203 (8.00")	318 (12.50")	117 (4.62")	44.5 (1.75")	171 (6.73")	
50 HP	326TC	636 (25.03")	Ø413 (Ø16.25")	305 (12.00")	133 (5.25")	121 (4.75")	470 (18.50")	Ø16.7 (Ø.66")	359 (14.12")	203 (8.00")	318 (12.50")	117 (4.62")	44.5 (1.75")	171 (6.73")	
60 HP	364TC	685 (26.98")	Ø467 (Ø18.38")	286 (11.25")	149 (5.87")	89 (3.50")	508 (20.00")	Ø16.7 (Ø.66")	383 (15.06")	229 (9.00")	356 (14.00")	127 (5.00")	44.5 (1.75")	171 (6.73")	
75 HP	365TC	685 (26.98")	Ø467 (Ø18.38")	311 (12.25")	149 (5.87")	89 (3.50")	508 (20.00")	Ø16.7 (Ø.66")	383 (15.06")	229 (9.00")	356 (14.00")	127 (5.00")	44.5 (1.75")	171 (6.73")	

PUMP MODEL	INLET & OUTLET	DIMENSIONS IN MILLIMETERS (INCHES)									
		P	Q	ØR	S	T	V	W	X	Y	
2100/2150	2"	133.5 (5.26")	141 (5.56")	226 (8.90")	21 (.83")	110 (4.33")	30 (1.18")	62.5 (2.46")	94 (3.70")	131.5 (5.18")	
2200	2"	126.9 (5.00")	136.5 (5.37")	260 (10.24")	30 (1.18")	110 (4.33")	35 (1.38")	70 (2.75")	93 (3.66")	151 (5.94")	
2250	2-1/2"	137.5 (5.41")	141 (5.56")	275 (10.83")	25 (.98")	117 (4.61")	37.2 (1.46")	75.5 (2.97")	100 (3.94")	153 (6.02")	
2400	3"	168.2 (6.23")	164.2 (6.46")	340 (13.39")	29 (1.14")	151 (5.93")	49 (1.93")	96.6 (3.80")	110 (4.33")	186.5 (7.34")	

1265000033
5/23/02